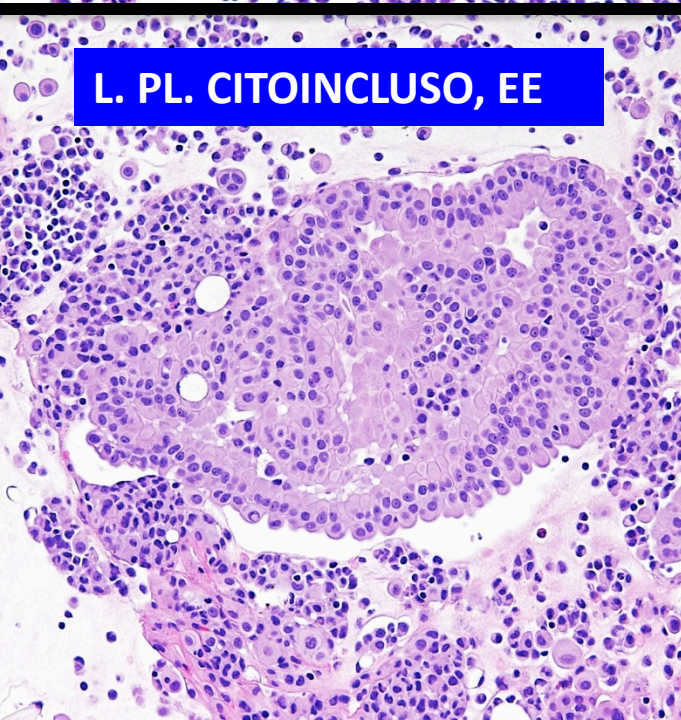
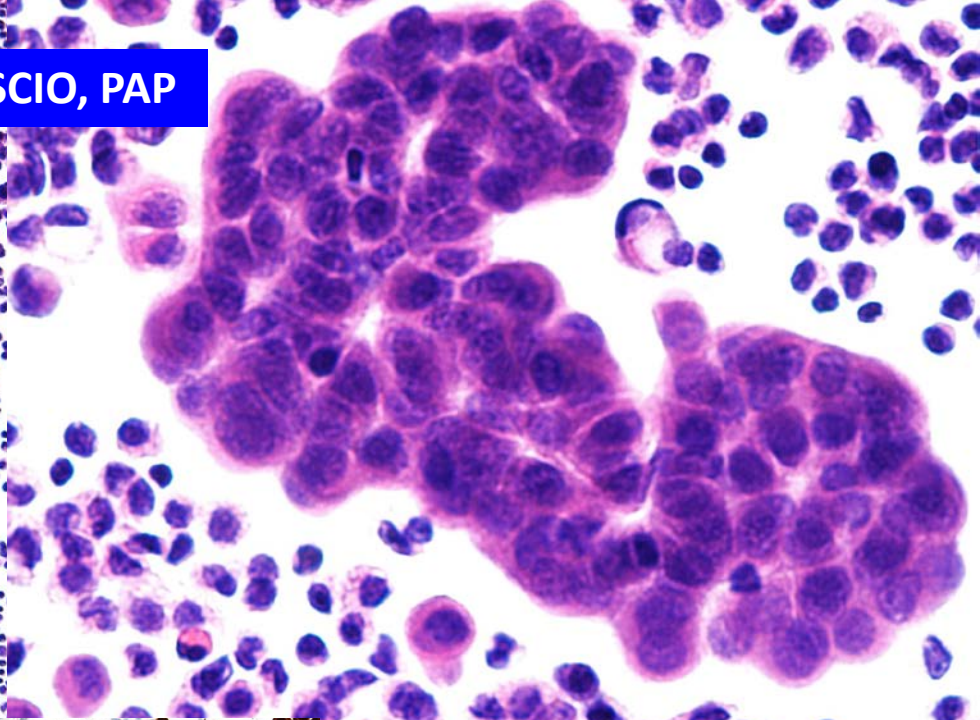
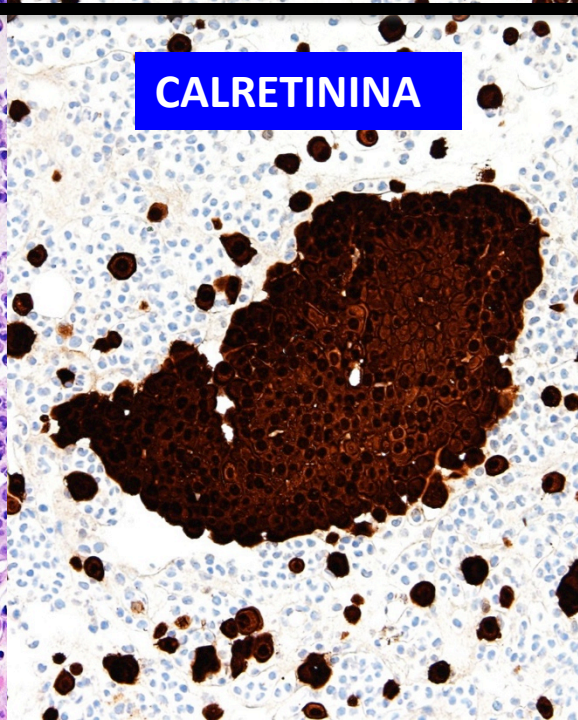


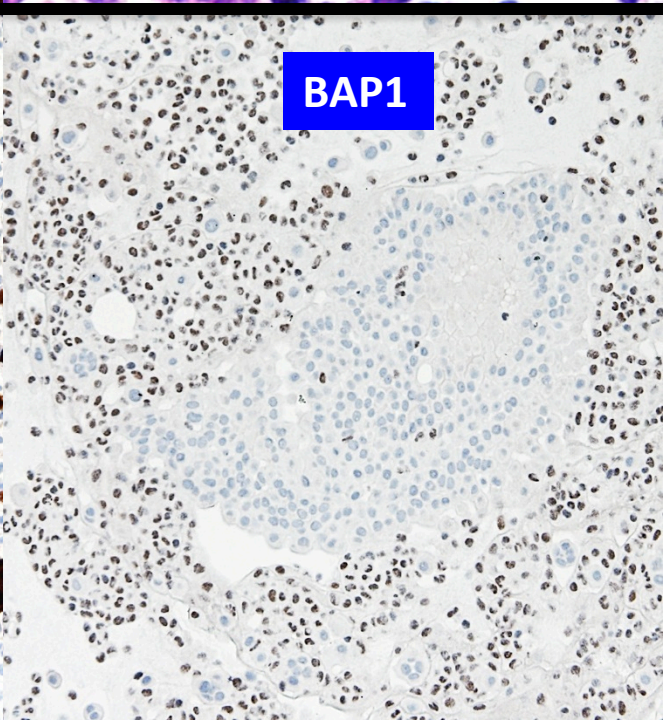
L. PL. STRISCIO, PAP



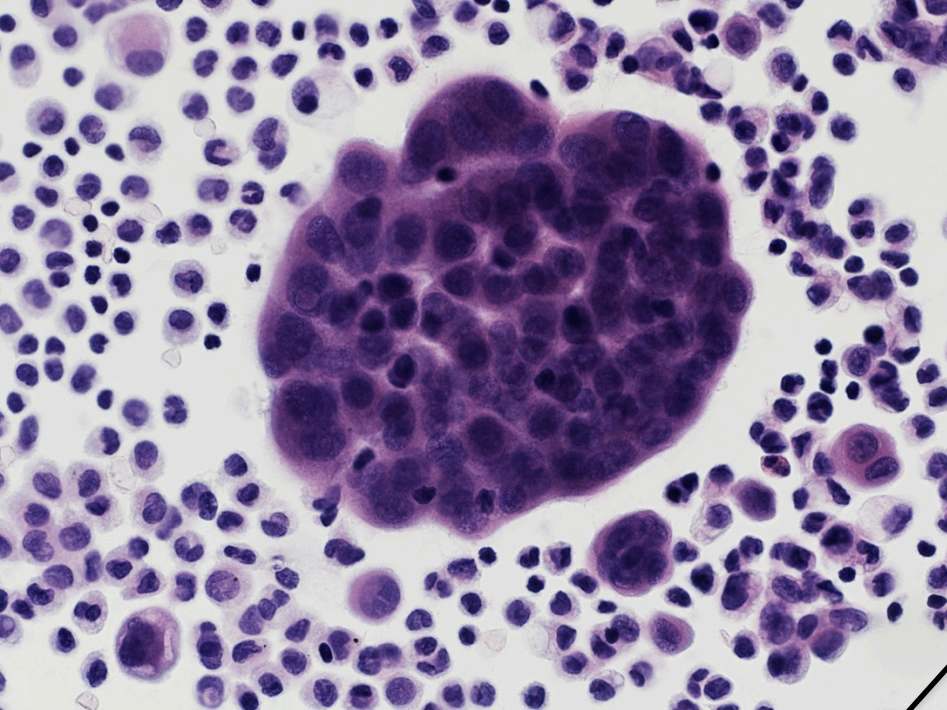
L. PL. CITOINCLUSO, EE



CALRETININA



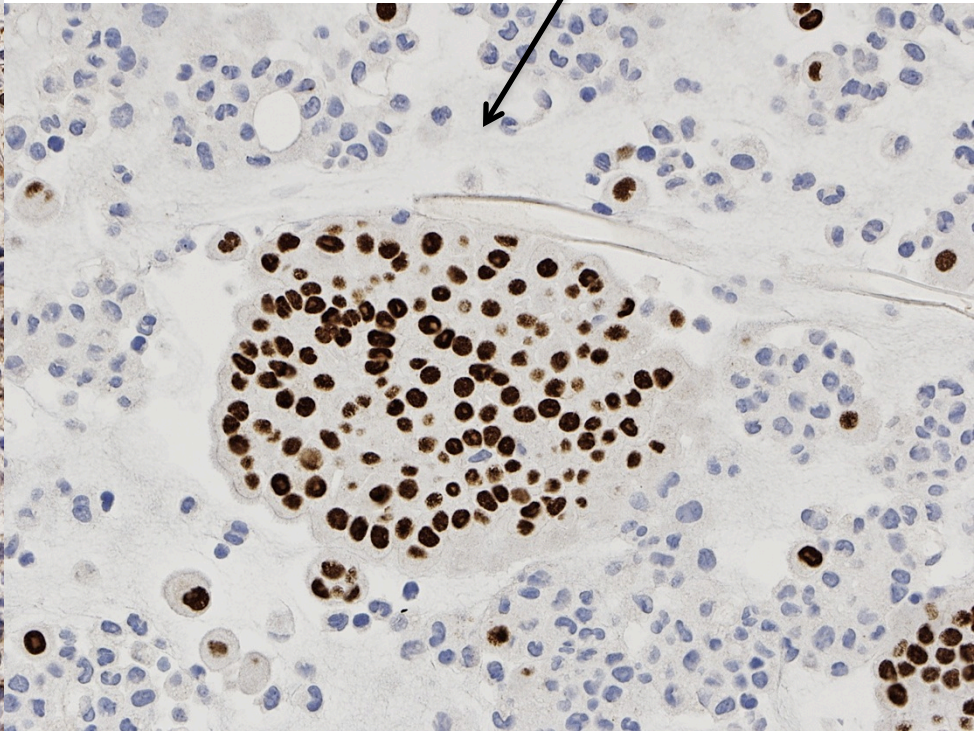
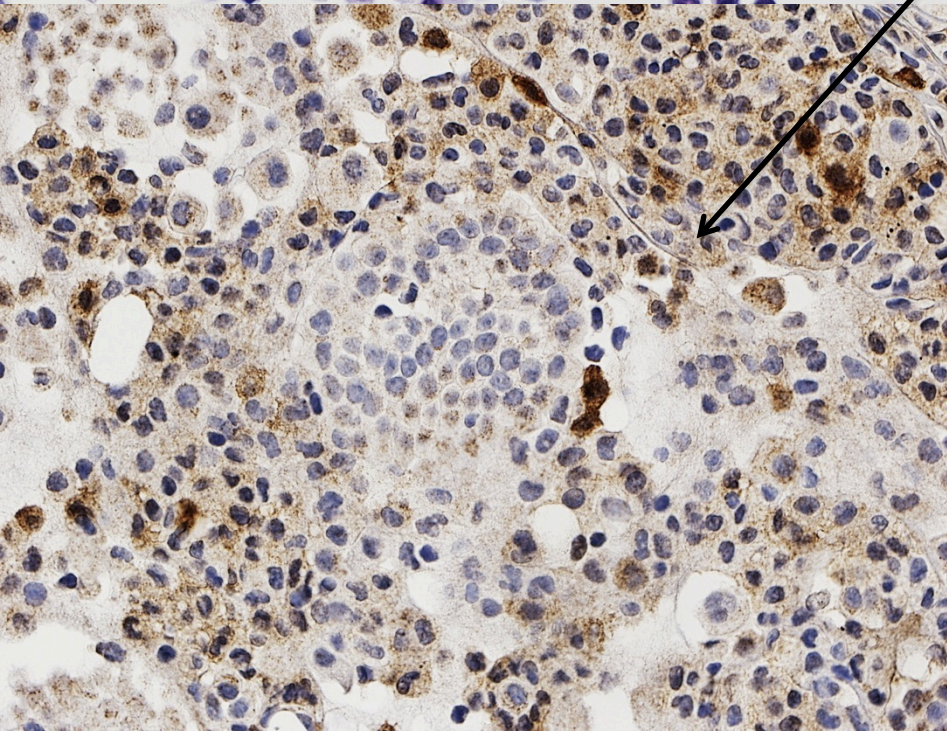
BAP1

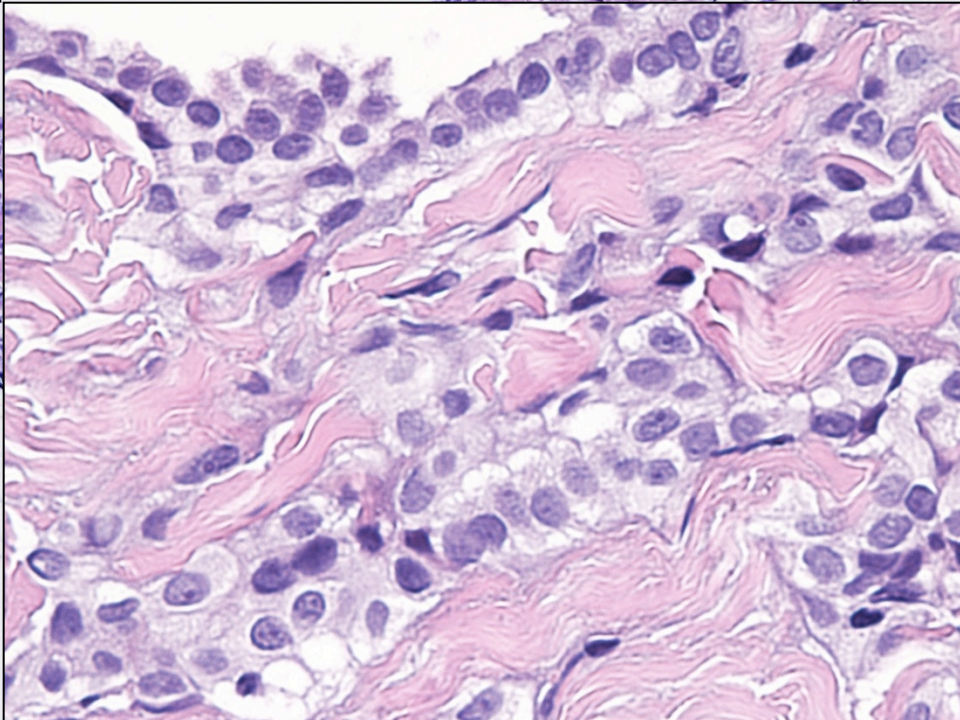
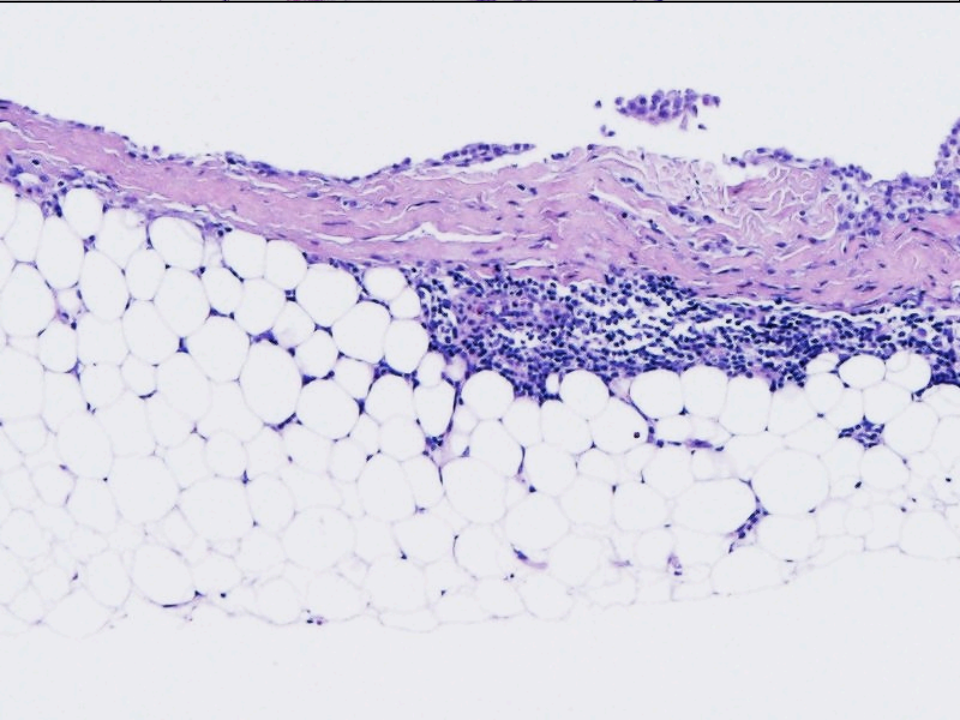
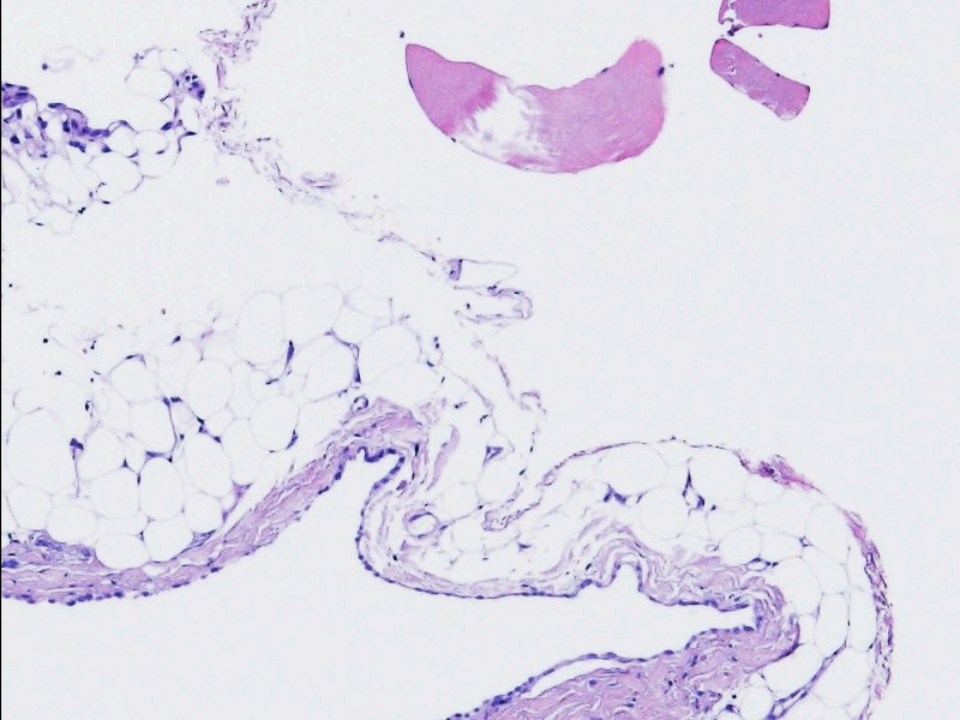
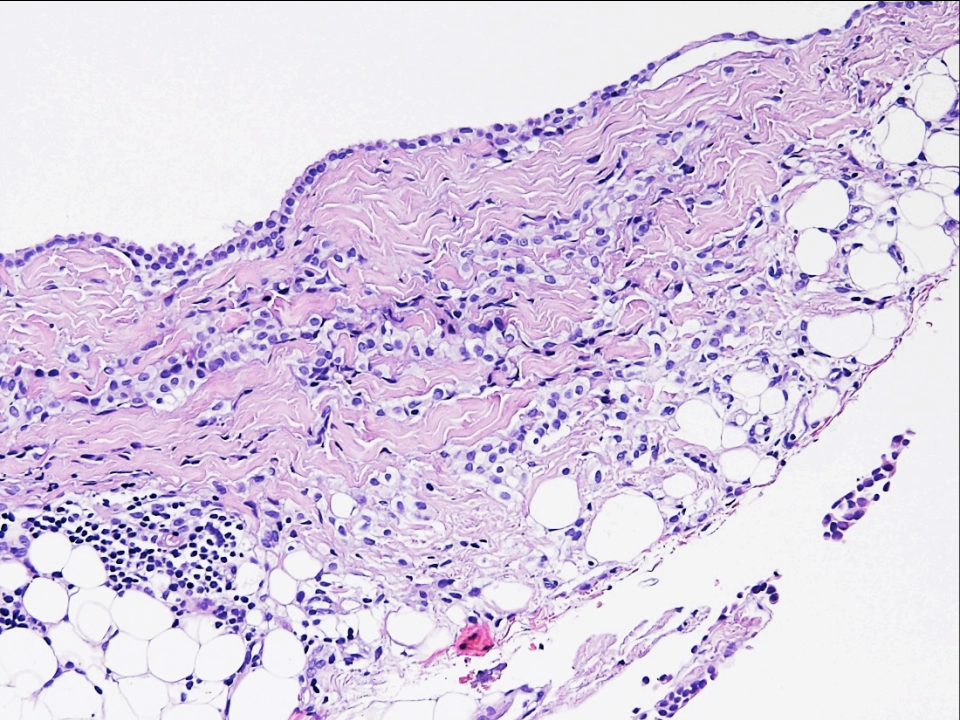


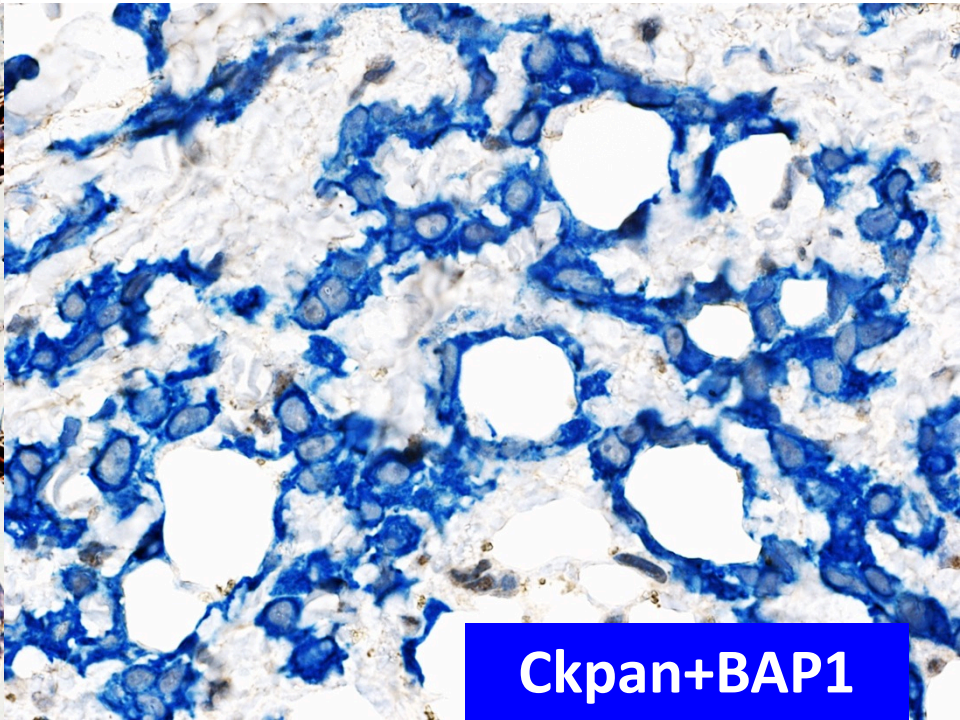
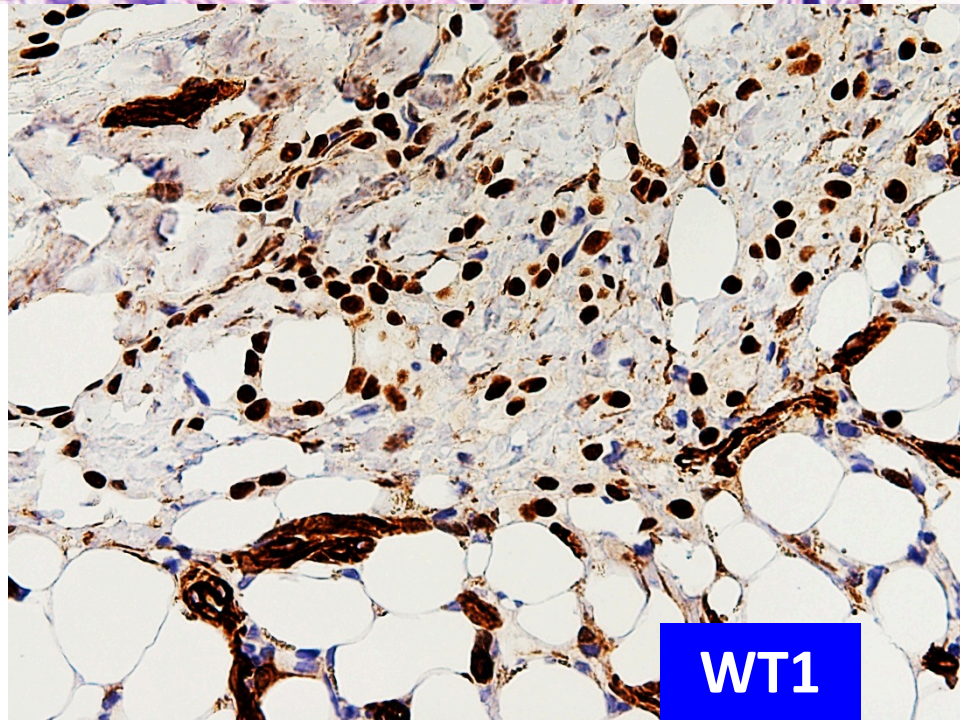
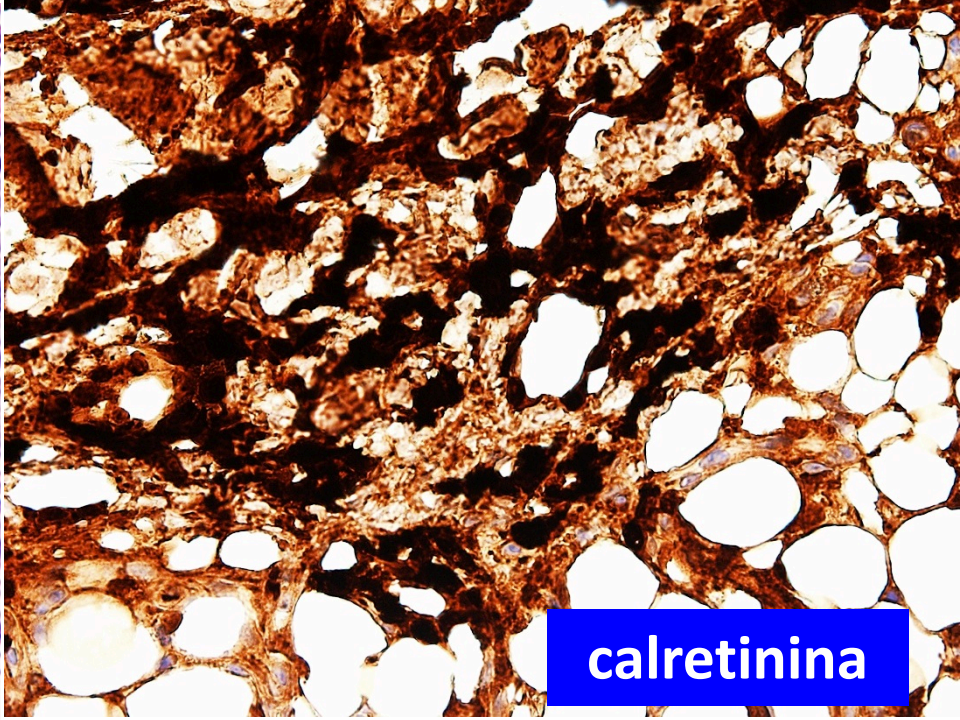
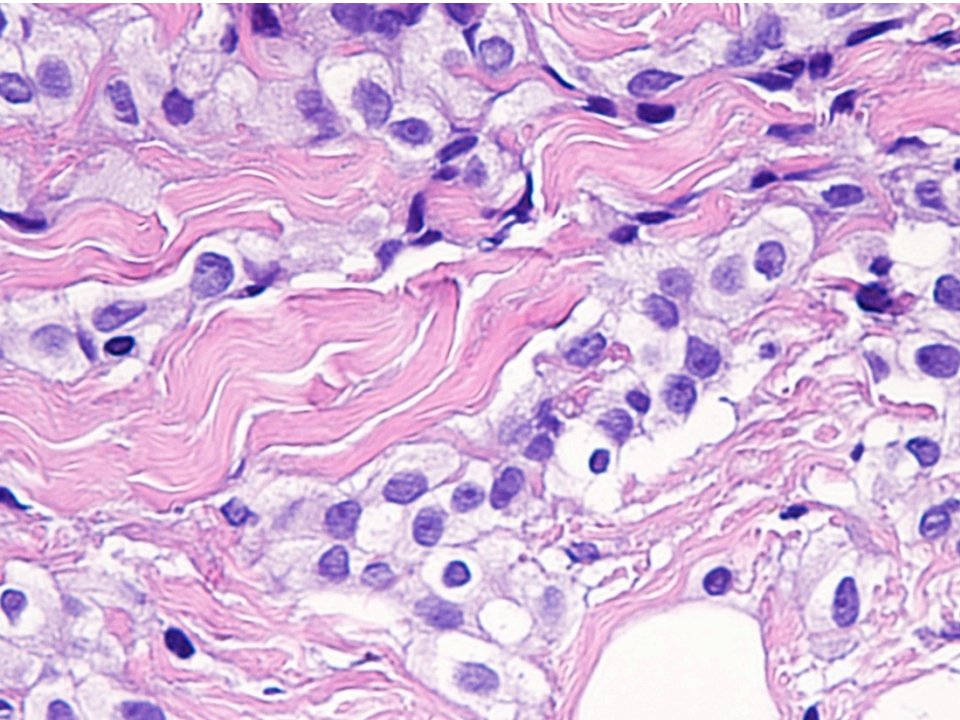
**Altri marcatori (S100, MART1, CEA, TTF1): negativi**

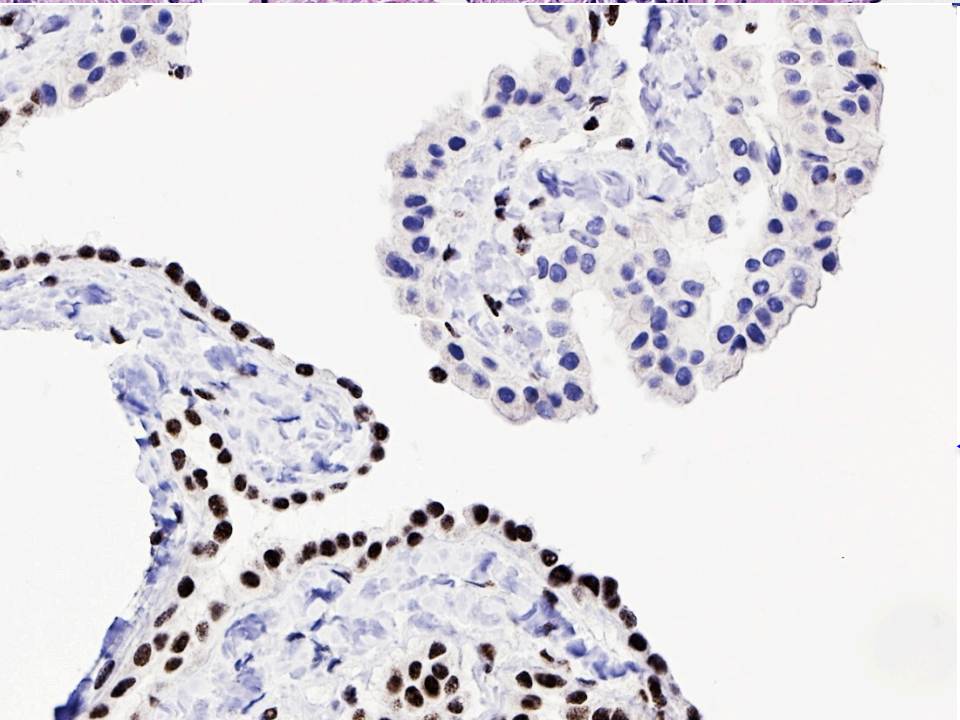
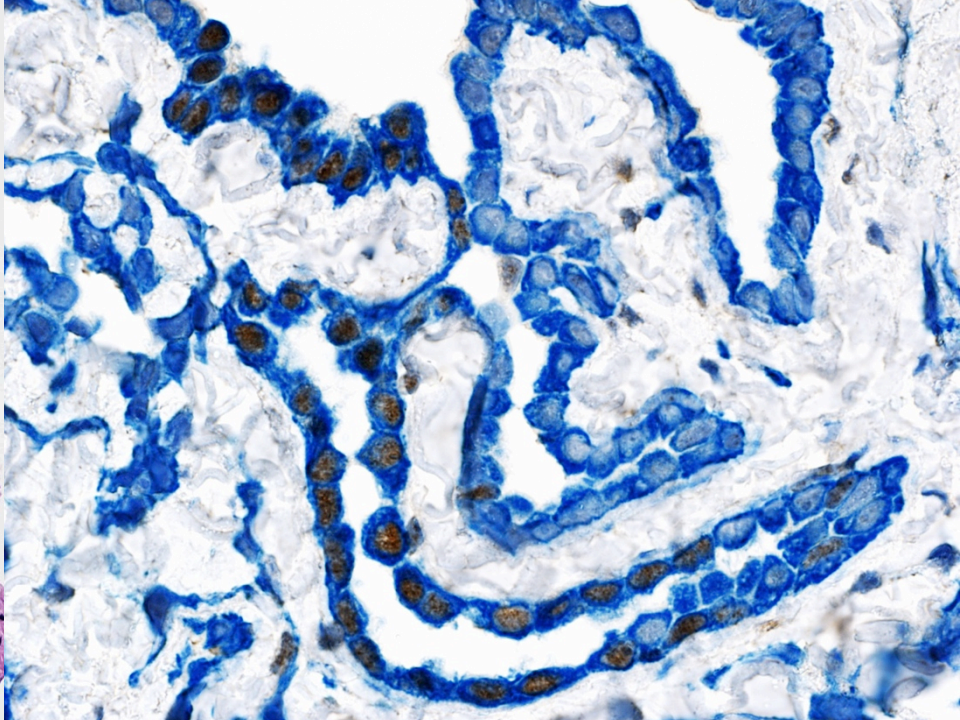
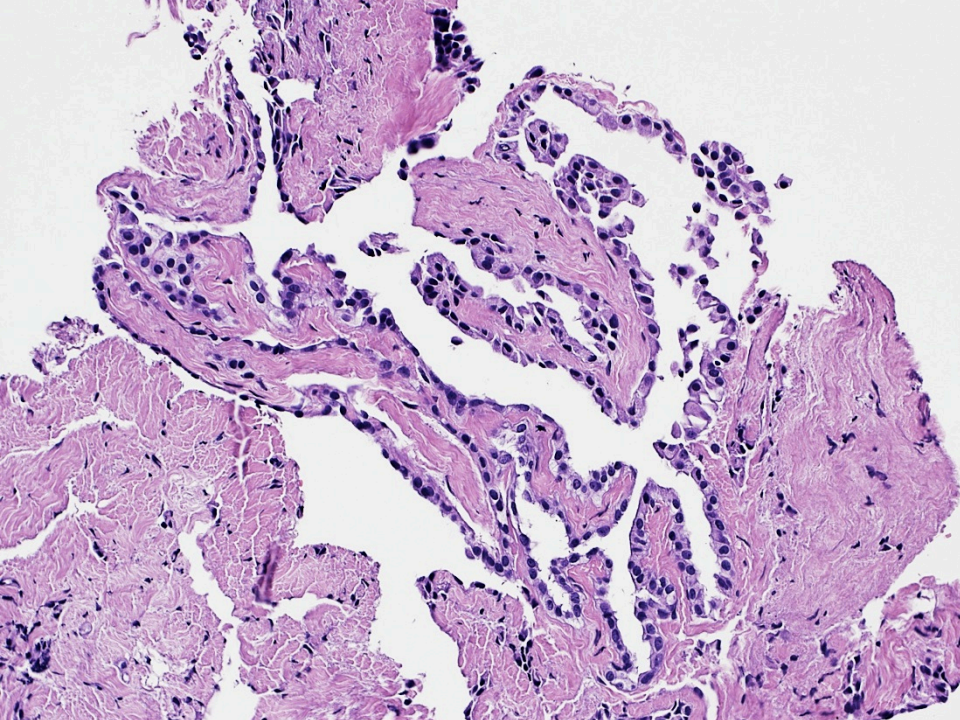
**CL4**

**WT1**





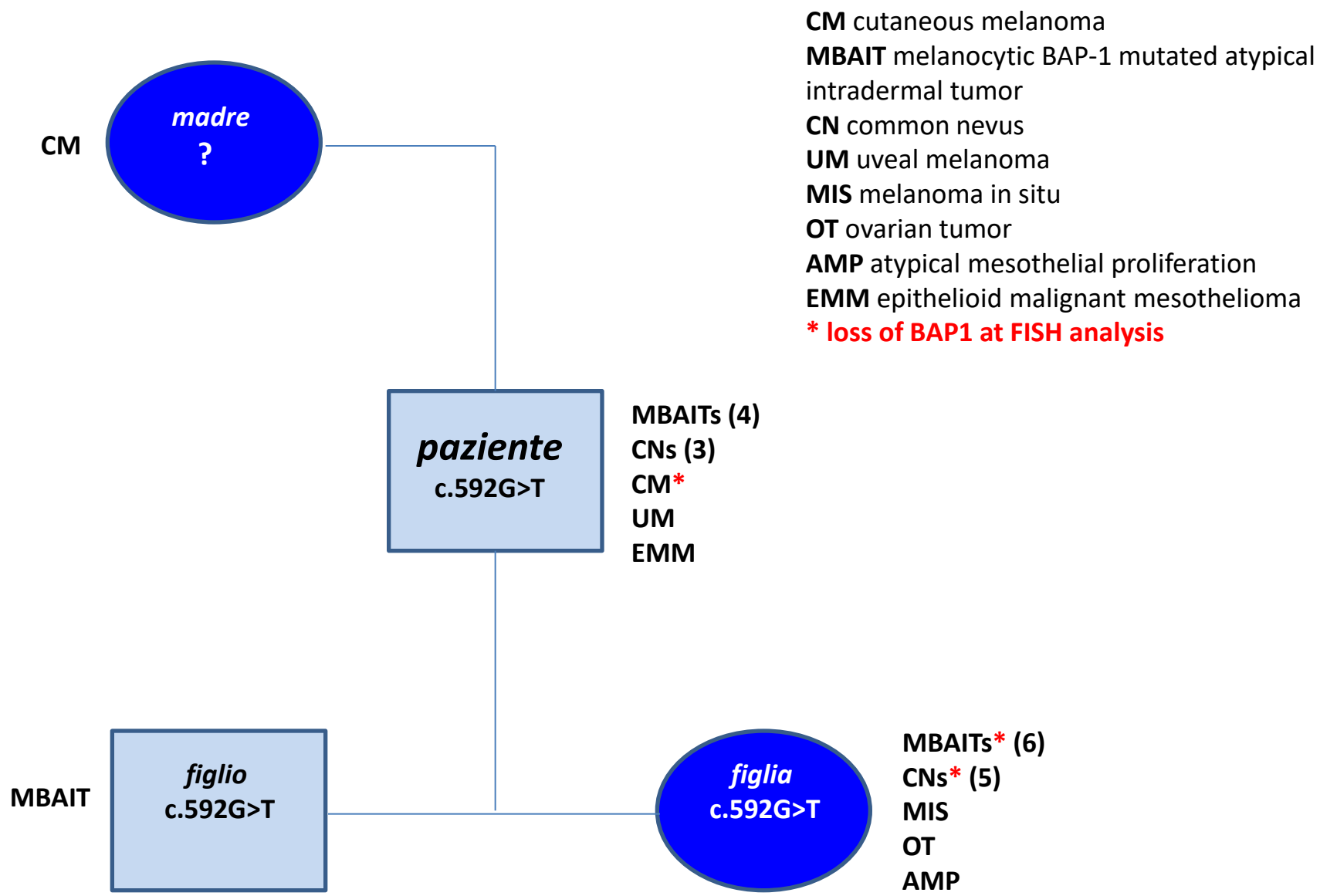




**Ckpan+BAP1**

**BAP1**

- **1998-99: melanoma occhio destro, Chirurg+RT**
- 2001-2011: multiple asportazioni di lesioni cutanee melanocitiche (nevi comuni e lesioni atipiche [**nevi di Wiesner**], tra cui un melanoma insorto su nevo di Wiesner localizzato alla coscia sin.)
- **2014: consulenza genetica: mutazione germinale di BAP1** **c.592G>T**
- 2015: metastasi massiva di melanoma in linfonodo inguinale sin.
- 2015: inizio terapia con Ipilimumab (1° linea)  
TC di controllo dopo 4 cicli: progressione linfonodale
- 2016: dacarbazina (2° linea)  
TC 2016: non lesioni focali pleuro-polmonari, non versamento pleurico



**mesotelioma maligno diffuso di tipo epitelioide  
in paziente con BAP1-Tumor Predisposition  
Syndrome (BAP1-TPDS)**



BAP1 a tumor suppressor  
gene driving malignant  
mesothelioma  
M. Cheung, J. Testa

Transl Lung Cancer Res  
2017, 6: 270

**Table 1** Recurrent tumor types reported in *BAP1* mutation carriers to date

Tumor type	Number of cases
Malignant mesothelioma	56 (+44) = 100
Uveal melanoma	57 (+36) = 93
Cutaneous melanoma	37 (+32) = 69
Renal cell carcinoma	18 (+27) = 45
Melanocytic tumor	34 (+4) = 38
Basal cell carcinoma	17 (+12) = 29
Breast carcinoma	12 (+16) = 28
Lung carcinoma	7 (+15) = 22

Many *BAP1* mutation carriers develop multiple tumors types. The numbers in parentheses indicate the number of cancer cases found in *BAP1* families for which DNA sequence analysis was not performed due to unavailability of germline DNA. The most common reported to date being MM and UM (7 patients), melanocytic tumors and CM (7 patients), CM and basal cell carcinoma (7 patients), and MM and CM (6 patients). MM, malignant mesothelioma; UM, uveal melanomas; CM, cutaneous melanoma.

**GRAZIE**