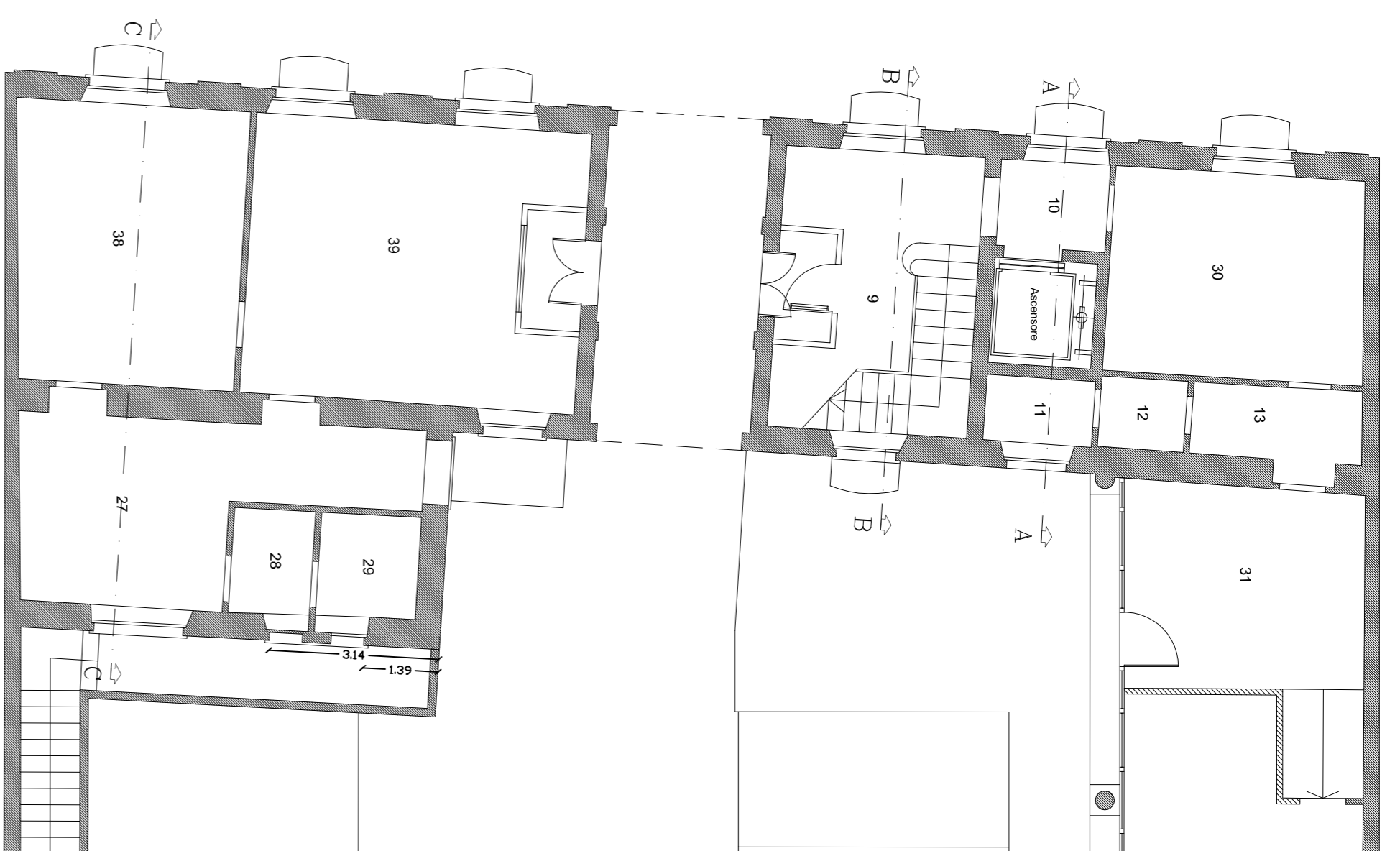
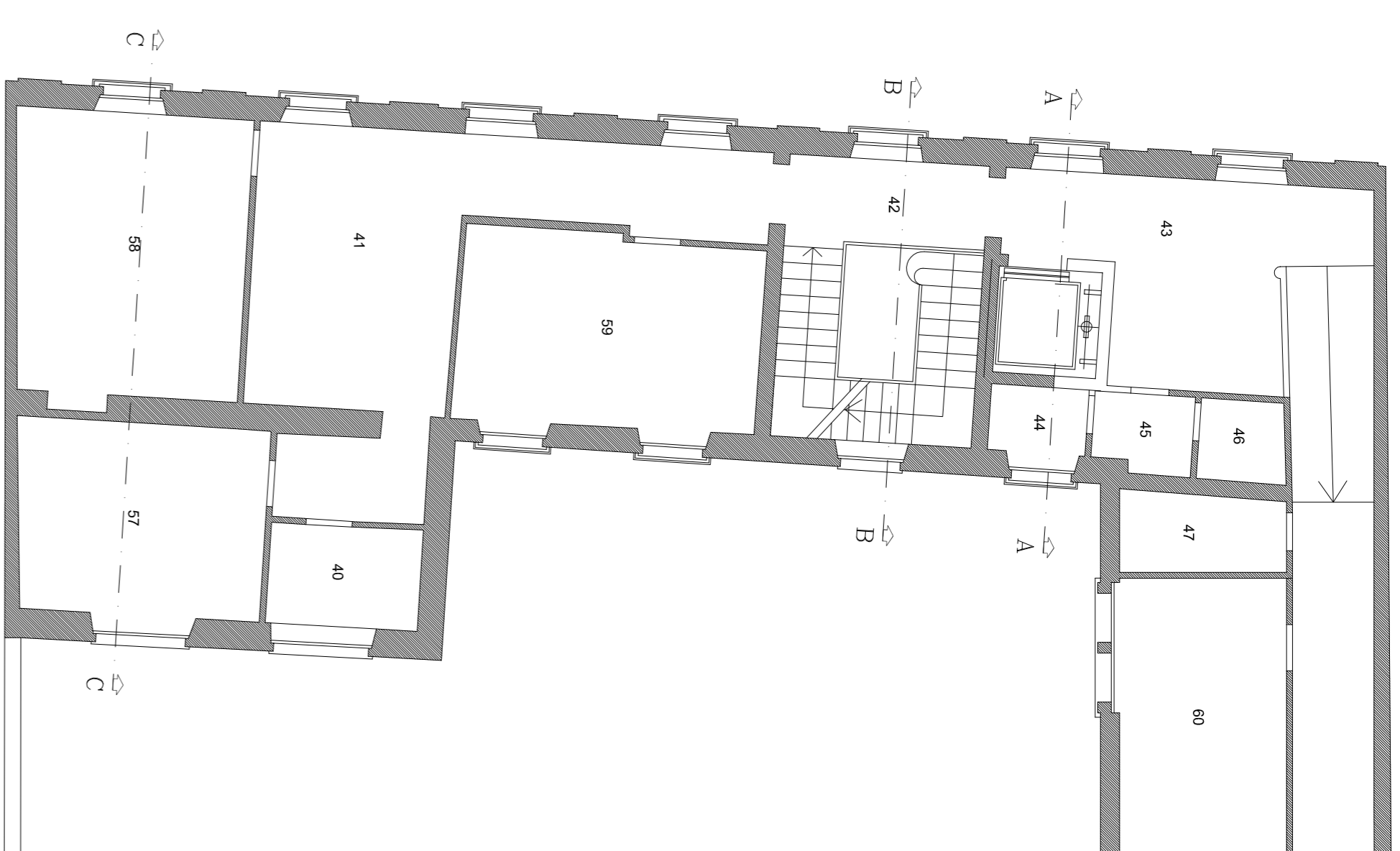


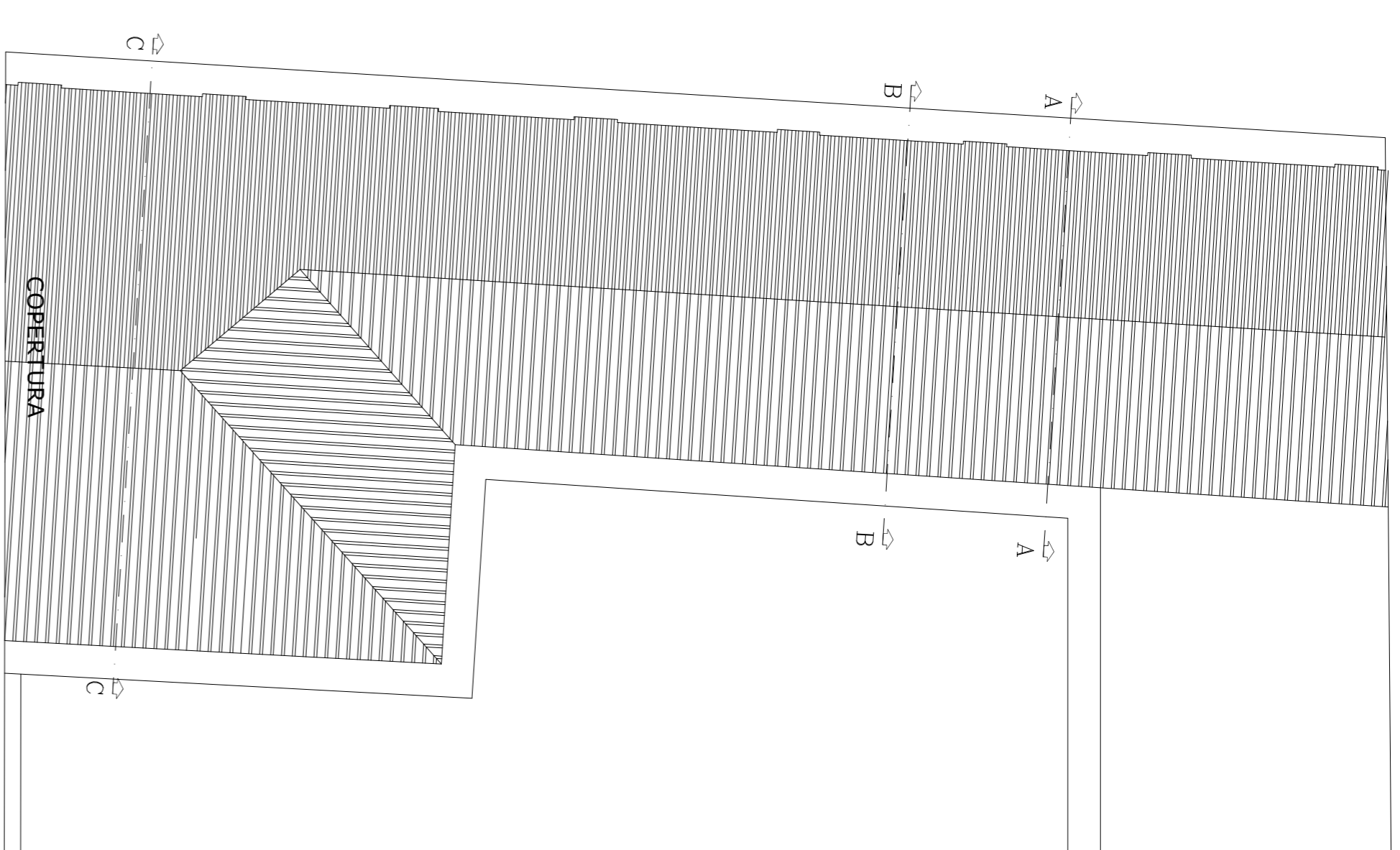
PIANO INTERATO



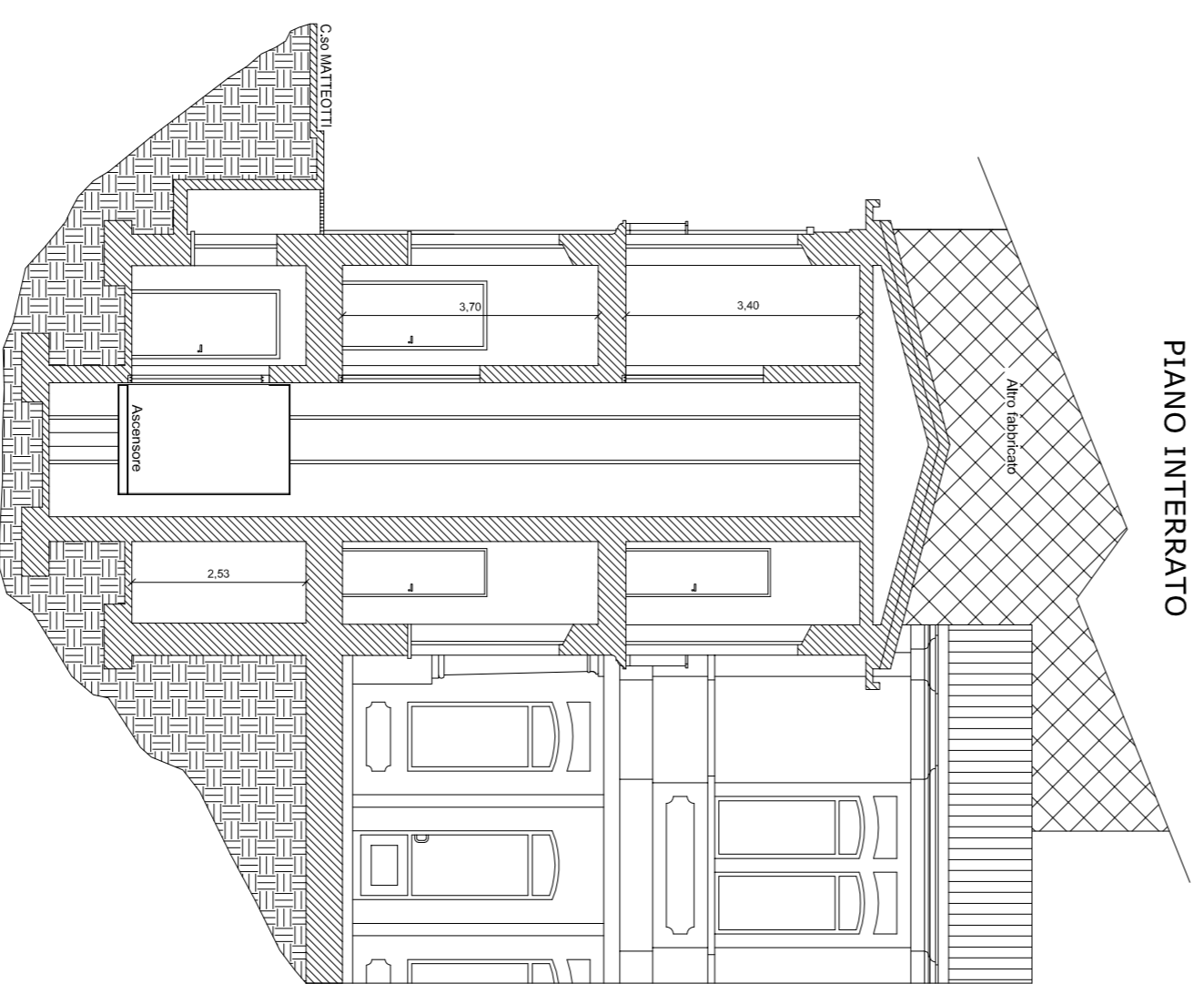
PIANO TERRA



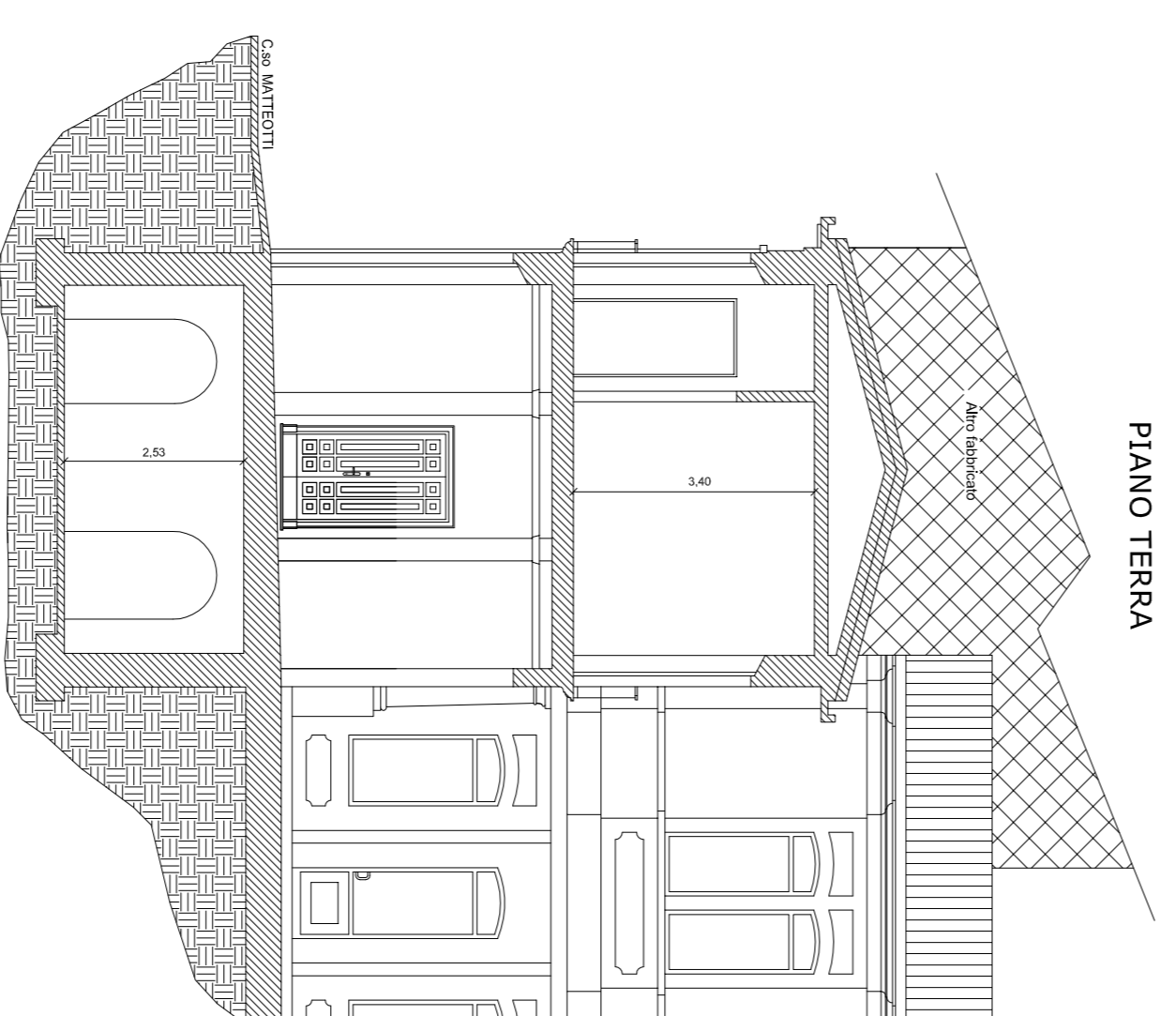
PIANO PRIMO



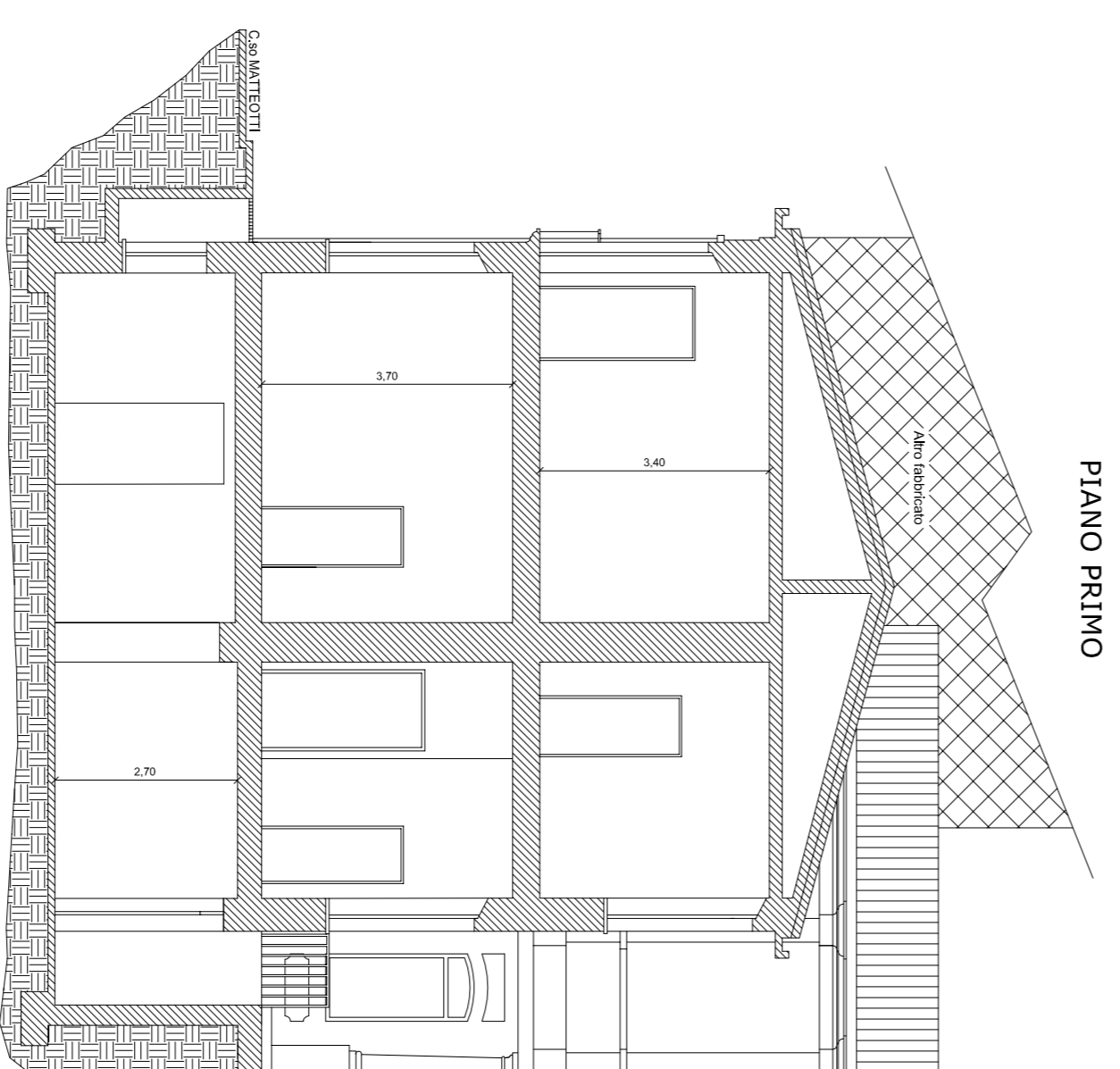
COBERTURA



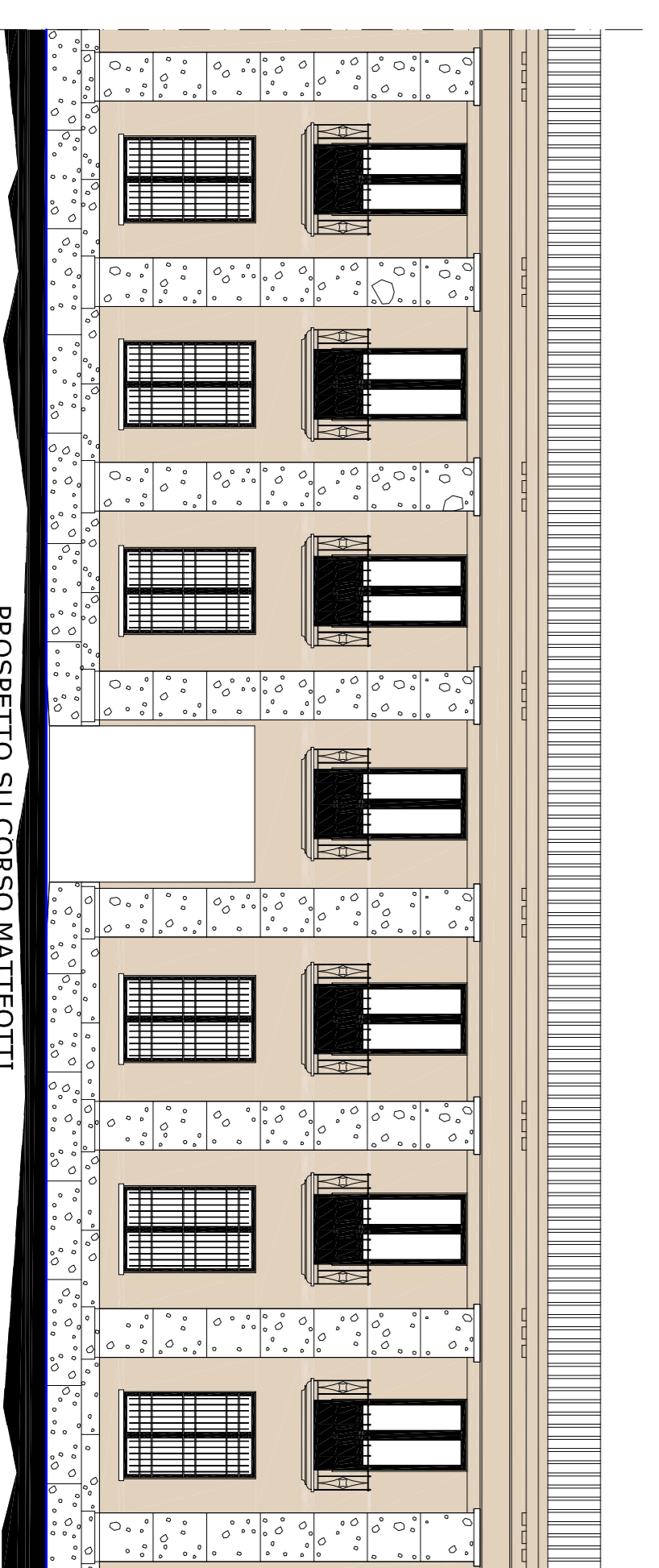
SEZIONE A-A



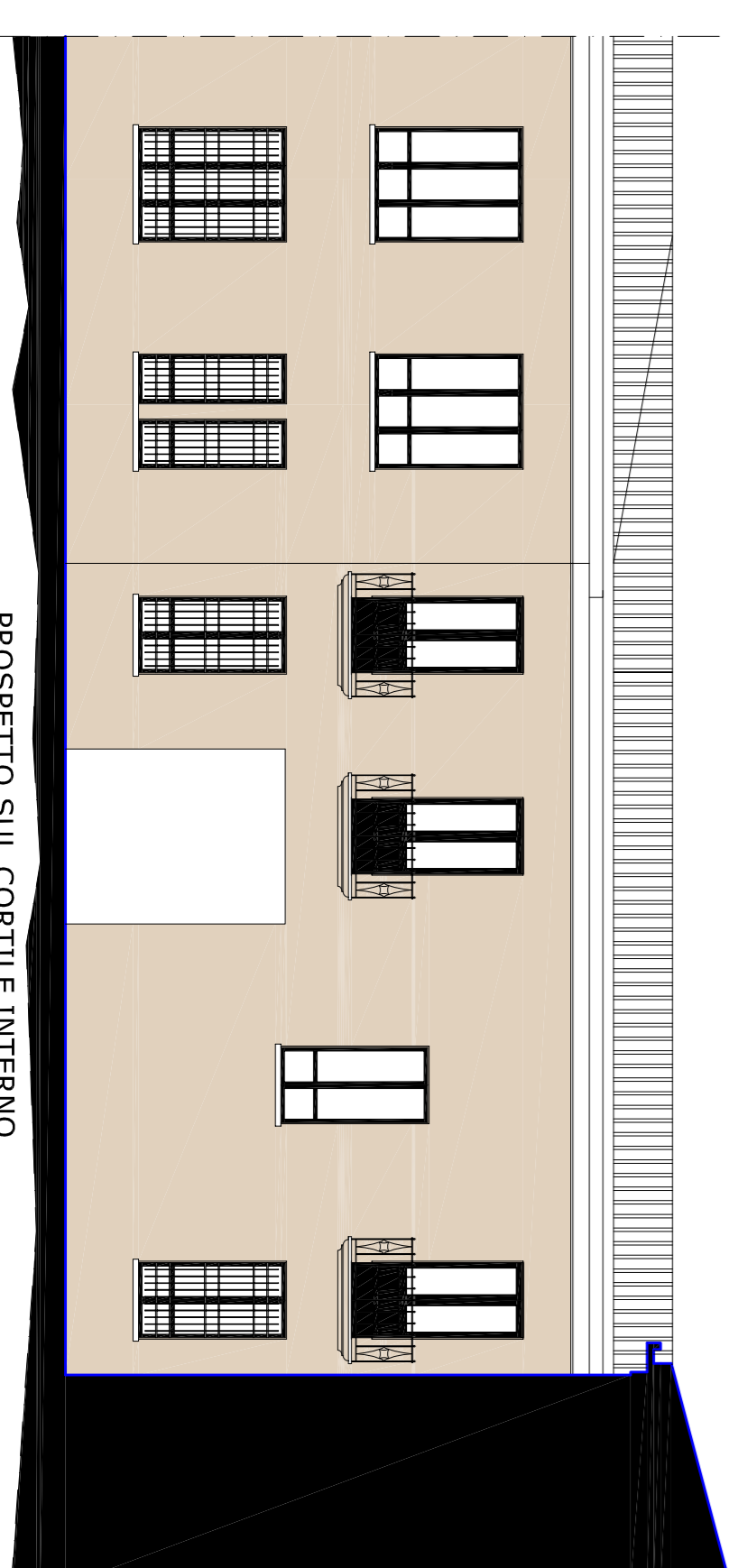
SEZIONE B-B



SEZIONE C-C



PROSPETTO SU CORSO MATTEOTTI



PROSPETTO SUL CORTILE INTERNO



Viale Duse degli Anzani, 15
25124 Brescia
Tel. 030/2630647 - Fax 030/2630213

PROGETTO ESECUTIVO

Brescia, It

PROGETTO DI:

Manutenzione straordinaria del tetto dello stabile posto in corso Matteotti - Brescia consistente nella sistemazione completa del tetto, revisione sistema e scaricazione acque piovane piano interrato interessato da frequenti allagamenti.

PROGETTISTA:

arch. Niccolò Arnocchia

IL RESPONSABILE
DEL PROCEDIMENTO
ing. Giuseppe Santalucia

ELABORATI

Arch. I

Piante e sezioni e prospetti - Situazione esistente

Scala 1:100