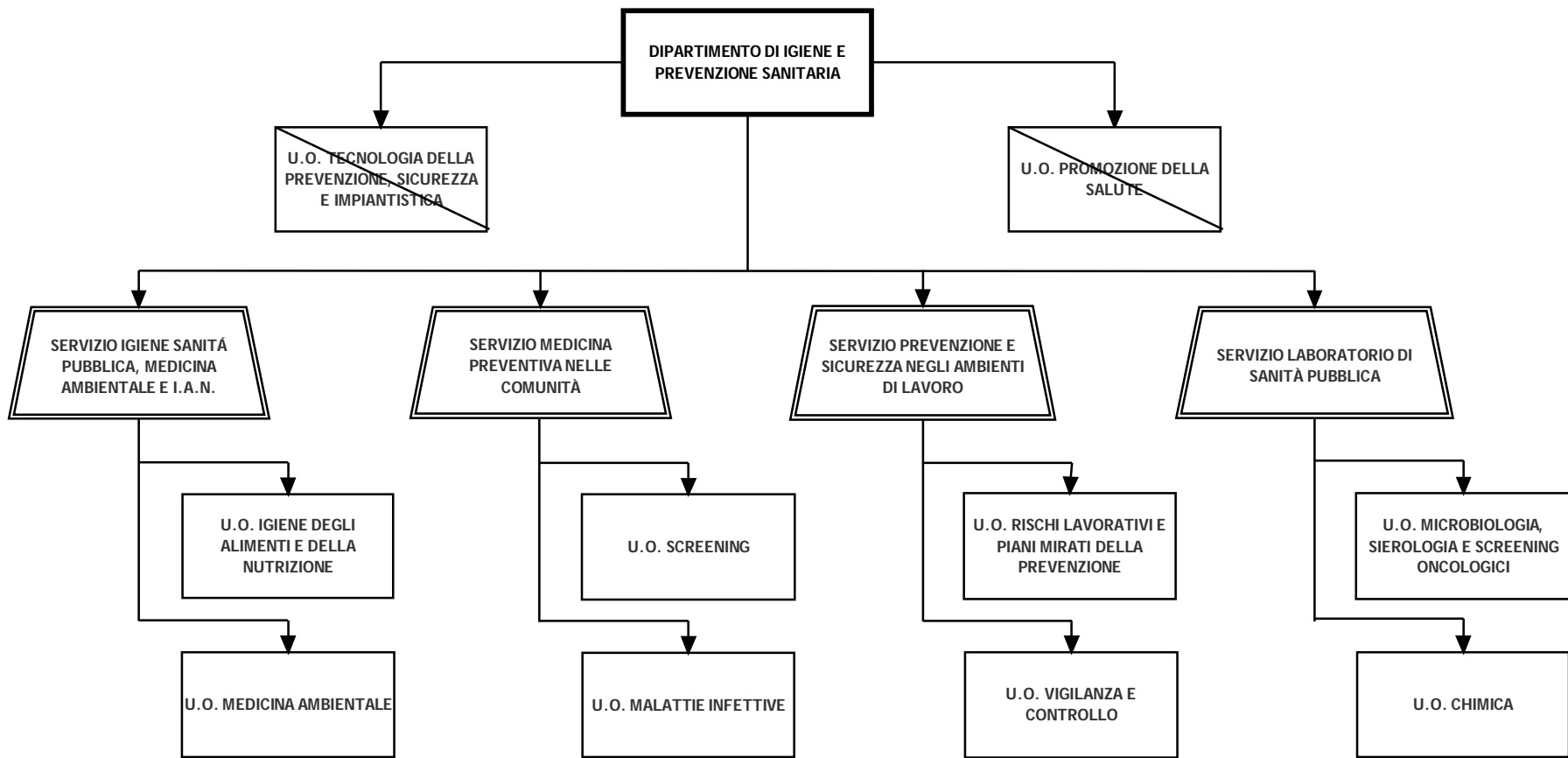


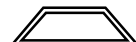
ORGANIGRAMMA PROPOSTO
TAVOLA 2.2.3 - DIPARTIMENTO DI IGIENE E PREVENZIONE SANITARIA



LEGENDA



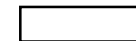
Dipartimenti gestionali



Strutture complesse



Strutture semplici a valenza dipartimentale



Strutture semplici



Relazioni : Dipendenza gerarchica